

RG-12P--A / RO-12P--A TYPE RESERVOIR INSTRUCTION MANUAL

This is separate type reservoir keeps store of grease or oil is supplied to small sized pump. There are for grease use and for oil use. For grease use is type of pushing out forcibly with compressed spring, and for oil use is type of discharging naturally by gravity.

1. Main Particulars:

The model of reservoir means as follows.

RG	12	P	0	A
Use for RG: Grease RO: Oil	Capacity 12: 2.5ℓ for grease 5ℓ for oil	Material of tank P: Plastic tank	Low level switch 0: without 3: with	A: With standard leg (Mounting fittings)

2. Construction and Parts Name

2-1. For Grease Use (Refer to Fig. 1)

- ① Fill stud (Grease supply port)
- ② Discharge port
- ③ Air vent valve
- ④ Air vent hole
- ⑤ Mounting metal fitting
- ⑥ Fixed screw
- ⑦ Spring
- ⑧ Gasket
- ⑨ Clamping bolt
- ⑩ Low level switch (option)

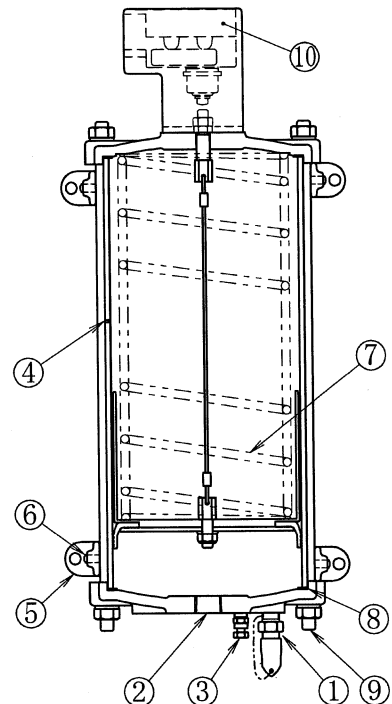


Fig. 1

2-2. For Oil Use (Refer to Fig. 2)

- ① Oil supply port (Air breather)
- ② Discharge port
- ⑤ Mounting metal fitting
- ⑥ Fixed screw
- ⑧ Gasket
- ⑨ Clamping bolt
- ⑩ Low level switch (option)

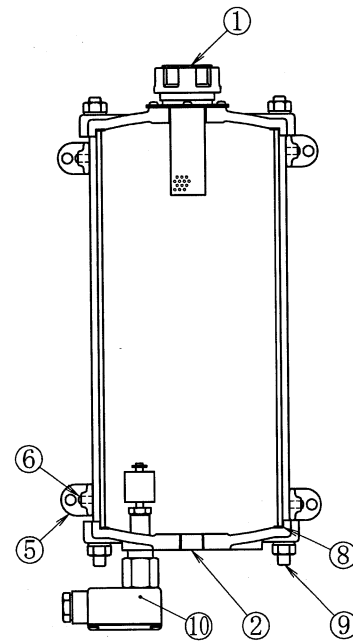


Fig. 2

3. Precautions for Handling

- 1) Reservoir should be supplied with clean lubricant.
- 2) On replenishment of reservoir for grease, use filling pump (Filler pack). On this time, clean up Reservoir and Quick coupler of Filler pack.
- 3) Do not pour grease or oil over regular amount. Otherwise, damage or leakage may be caused.
- 4) On replenishment of reservoir for grease, at first, supply reservoir with grease until grease flows out from ④ Air vent hole on upper side of reservoir, in order to push air is remaining in reservoir out. Once air venting is finished, at second time, no need to be done.
- 5) After replenishment, if air is pooled in bottom of reservoir, loosen ③ Air vent valve on undersurface of reservoir, and release air.

4. Precautions for Installation

- 1) Do not install in high temperature part. Reservoir may be deformed in circumstances of high temperature, because reservoir body is made of acrylic resin and is compressed by clamping bolts from above and below.
- 2) ⑤ Mounting metal fittings of four places should be fixed to even surface. If they are forced to fix to uneven surface, reservoir body may be deformed and damage or leakage may be caused. Mounting metal fittings can be moved by loosening ⑥ Fixed screw.
- 3) Reservoir for grease use is pressure type with ⑦ Spring. In order to enhance suction performance of pump, piping between reservoir and pump should be made thick and short as much as possible. And, reservoir should be installed above pump as much as possible.
- 4) The reservoir for oil use should be installed above pump in order to supply oil by gravity.
- 5) Do not retighten clamping bolt.

5. Maintenance Check

- 1) Check damage and leakage of reservoir regularly.
- 2) Reservoir should be disassembled by a person with specialized knowledge in safe facility and environment. In particular, reservoir for grease use includes strong spring, and disassembly is very dangerous.
- 3) Each time of disassembly, be sure to change ⑧ Gasket with new one. Reusing of gasket that has tightened once may cause leakage. Also, on reassembling, three ⑨ Clamping bolts should be equally tightened by torque of 23N · m.